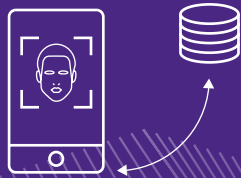


# IDWay - Citizen Digital ID

## System-based approach



Our system-based approach to digital ID leverages on government databases and / or identity documents to centrally issue and store citizen digital identity attributes.

### Preserving the root of trust

When it comes to implementing a digital ID program, protecting citizen data is paramount. Governments are best positioned to provide the highest level of confidence and security when creating digital identities. To support them in their mission, IDEMIA offers digital ID solutions that are either based on already existing national databases and/or state-issued ID documents.

A system-based approach offers the most inclusive method for digital ID. This solution verifies available ID evidence against the government root of trust, ensuring the highest level of assurance for the issued digital ID. This approach suits countries where regulation allows the central storage and management of citizens' personal information.

IDEMIA brings its expertise and advanced technology tailored to the states' need to preserve the root of trust at enrollment, verification, issuance and authentication stages.

### System-based digital ID

IDEMIA system-based solution allows online remote authentication and in-person ID verification with biometrics.

To onboard a citizen, the system enables the high quality capture and collection of the biographic and biometric proof presented by the citizen (passport, ID card, face, fingerprint, etc.). The biometric proof is securely transferred to a central system that manages cross-checks against public or private information systems. Finally, the system enables multi-factor authentication to be performed online.

The central implementation opens up scalability opportunities, enabling continuous improvements to the entire ecosystem immediately and uniformly.

The system-based approach features smartphone enablers for document (SmartDoc) and biometric (SmartBio) capture and liveness verification.

On the system side, the solution features different field-proven bricks of the IDEMIA IDWay suite of solutions: IDEMIA Open Platform System (IOPS), IDEMIA Biometric Recognition System (IBRS) and IDEMIA Population Registry System (IPRS).

### Benefits



#### Central implementation

All data stored on a secure central server

Flexible and scalable



#### Easy integration

API integration with national database ecosystem

Identity verification API for service providers

Mobile SDK for native mobile app integration (Android and iOS)



#### Compliance

OSIA: Open Standard Identity API  
NIST1800-63—Active and Passive

Liveness iBeta Present Attack  
Detection (PAD) Level 1 and 2

Open ID Connect

PSD2

## Why IDEMIA?

Long-standing experience in civil ID with over 135 customers and over 3 billion identity documents issued worldwide.

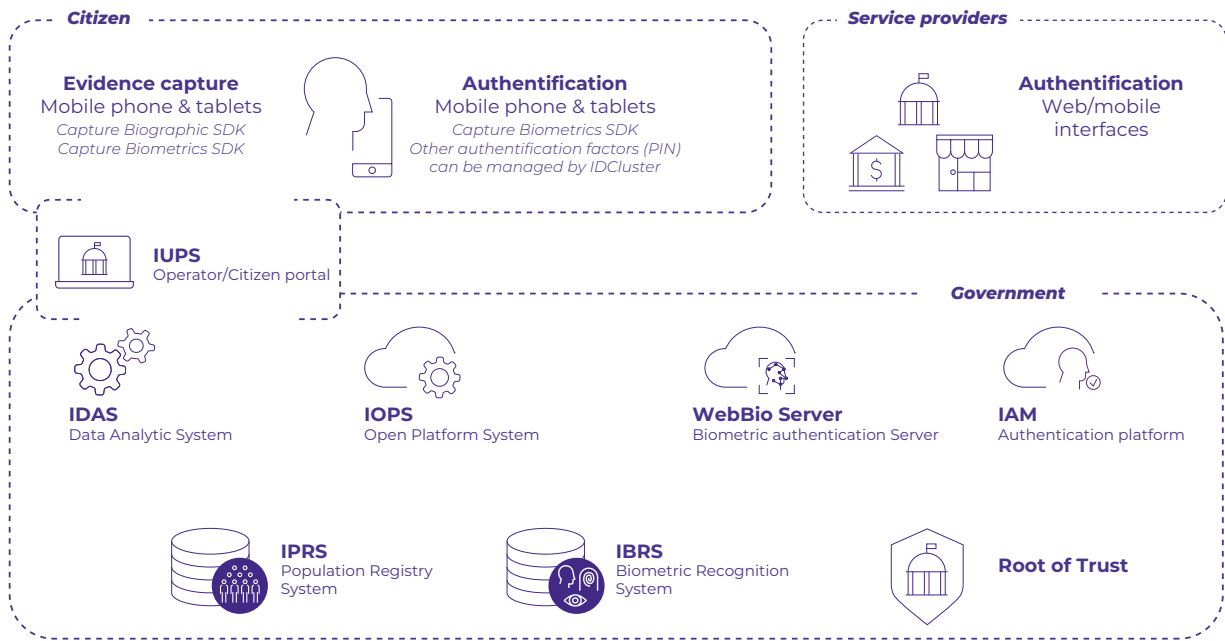
Extensive experience and solid reputation in biometrics with 40 years of experience in the field and multiple biometric-based projects.

Expertise in A.I., cloud solutions, cryptography, cybersecurity, advanced analytics and innovative sensors for biometric data capture.

Holistic approach to digital identity that is adaptable to local regulations and frameworks.

<sup>1</sup> National Institute of Standards and Technology

<sup>2</sup> Payment Services Directive 2



### Collect

IDEMIA offers the latest generation of self-enrollment applications, **IDEMIA SmartDoc SDK and SmartBio SDK** as well as a suite of biometric devices for assisted enrollment.

These allow to collect proof of identity to ensure the highest level of issuance:

- › Demographics (alpha)
- › Portraits
- › Fingerprints
- › ID document images

### Manage

The system issues digital identities and stores citizen attributes. It serves as a secure "System of Record" for service providers.

- › **IOPS:** Allows the integration and orchestration of all components needed to design an ID management solution according to any governments' needs.
- › **IBRS:** Provides multi modal biometric services (portrait, fingerprint), and data storage.
- › **IPRS:** Stores proof of identity (e.g. utility bills, birth certificates, proof of employment, etc.), and generates a unique identifier.

- › **IDAS:** Provides global data analytics
- › **IUPS:** Provides a citizen and operator portal for digital ID life cycle management.

### Use

The authentication platform receives requests from service providers and ensures authentication as per defined multi-factor authentication policies (PIN, OTP, face, fingerprint).

Usages are various across the public and the private sector. The ability to open a bank account, file taxes, and access health services are just some of the opportunities with a national digital identity.

### Main deployment

#### Aadhaar, the Indian Government's biometric identification project

Launched in 2009, Aadhaar is the world's largest multi-biometric digital identity program. Each resident has a unique 12-digit identification number (Aadhaar number) that is associated with three biometrics: irises, fingerprints, and face. To date, the program's adoption rate is over 95%.



### Cutting-edge technology

- › Powerful multi-biometric engine proven to scale up to 1B+ citizens
- › API integration with national database ecosystem
- › Identity verification API for service providers
- › Mobile SDK for native mobile app integration
- › Certified by iBeta, NIST NVLAP accredited biometrics testing lab (NVLAP testing Lab Code 200962-0)
- › Biometrics test procedures that are independently audited by NVLAP (National Voluntary Laboratory Accreditation Program) in accordance with the ISO/IEC 17025:2017



### IDEMIA's digital identity solutions for governments

**Among others, this system-based approach is part of IDEMIA's Digital identity solutions for governments:**

- › An eID-based approach
- › A device-based approach