

ALIX

Using AI to solve the problem of lost luggage



Every year, 2.8 million¹ pieces of luggage are lost worldwide. Not only is this a major concern for travelers, but it also significantly impacts the image of airlines and their finances. Designed with and for lost luggage operators, IDEMIA's solution offers a new approach that will help airlines reduce the number of lost luggage and increase customer satisfaction.



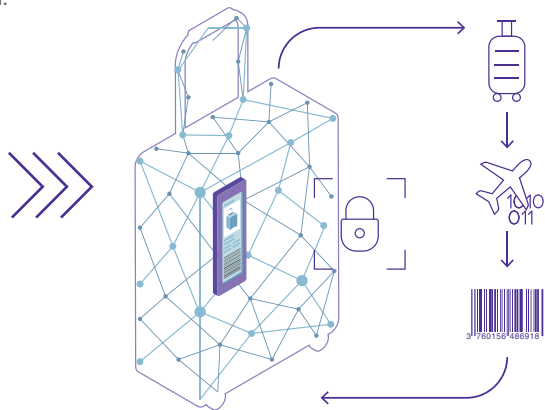
Powered by **Artificial Intelligence**, ALIX helps automate the lost luggage search process by providing each bag with an **augmented digital tag**. This innovation enables **operators** to identify bags that have lost their tags, **using only the bag's photo**.

How it works?

Once a bag is managed by the baggage handling system of the airport, the **ALIX Arch** module performs **high-quality** captures of all five sides of the luggage to create its **augmented digital tag**. If the printed tag is torn off during its journey, the operator takes a new set of images of the bag and uses **ALIX Core** to retrieve its augmented digital tag, thus **identifying** the lost luggage. The operator creates a new printed tag and puts the luggage back into the baggage handling system.

Easy to interface with existing IT systems, ALIX is **scalable** and **rapidly operational** in the field.

All elements are securely combined to create the augmented digital tag



IDEMIA, your #1 partner in data management programs

Drawing upon over 40 years of experience in biometrics and over 5 billion biometric records processed by IDEMIA and managed by our customers worldwide, IDEMIA is your #1 partner for critical data management programs. Our top-ranking algorithms combined with our security-driven

turnkey solutions deliver operational efficiency to the ever-evolving requests of our customers.

Our biometric and data management expertise now assists the lost luggage search process.



Optimized operations

- > Highly accurate luggage recognition
- > High availability



Easy to integrate

- > Smooth integration into the existing luggage handling ecosystem
- > Centralized platform in the cloud



User-friendly

- > Limited training required
- > Accommodates various use cases

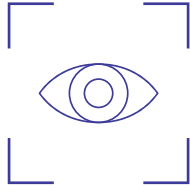


Privacy by design

- > Embedded data protection
- > Secure access to data

1- Figure per year prior to COVID-19

» ALIX, advanced hardware and software at your service



ALIX Arch

- › **High-quality** image capture equipment
- › **Automatic** and **manual** image capture capabilities
- › **Moving** bags captured even in dim lighting
- › **Optimized** coverage of the five visible sides of the bag
- › **Reliable** volume assessment
- › **Independent** installation kit



ALIX Core

- › **Cloud-based** SaaS platform
- › **Secure centralized** system
- › **Field-proven algorithms** for image processing and luggage identification
- › **Embedded** matching service
- › **High-recognition** capacity
- › **Large** data flow management
- › **Reliable** data collection and updates

ALIX additional benefits

OPTIMIZED OPERATIONS

- › **Rapid** start-up
- › **Fast matching results** displayed with rank and score
- › **Reliable** and **effective** matching algorithms
- › **Low** operating costs
- › Autonomous system with supervision capabilities
- › **No need** for extra space or capacity
- › **Ready** for additional operational use cases: fraud management, proof management, etc.

USER-FRIENDLY

- › **Compatible** with all types of luggage
- › **Convenient:** does not require any modifications to the traveler's luggage

- › **Customizable** business process and reporting
- › **Easy to use** portal for the main functions and central management
- › **Customizable** display of data and results
- › **Rapid** export of reports

PRIVACY BY DESIGN

- › **State-of-the-art** IT security system
- › **Secure** web services and **encrypted** communications
- › **Secure segregation** of information depending on the user profile
- › **Compliant** with European General Data Protection Regulations (**GDPR**)

EASY TO INTEGRATE

- › **Simple** software integration with API and/or web services
- › **Web interface** reducing integration efforts
- › **Interoperable** with third-party systems
- › **Easy** future capacity expansion

